

Inc # A0038764

TRACS TORQUE

Trucks too.

P.O. Box 569 Irymple 3498.

OCTOBER 2021.

Newsletter for
Members of the Tractor
Restoration and Appreciation Club
Sunraysia Inc.



Hurliman.

SEPTEMBER 12th MEETING / TRACTOR PULL TRUCK SHOW IN HOUSE DAY With AGM WAS CANCELLED.

THE KEY TO HAVING A OCTOBER MEETING AGAIN DEPENDS ON COVID IF WE CAN HAVE AN OUTDOOR GATHERING OF 50 PEOPLE it will be on.

The road map does not look encouraging but we will say OCTOBER 10th with fingers crossed.

Check on Covid regulations close to 10th OCTOBER, if in doubt phone a friend.

The plan is 11:00am Sunday 10th October Meeting then AGM at Wilga Rd.

STILL LOOKING FOR THE MAGIC NUMBER

50!

FUTURE EVENTS.

SEPTEMBER 18th Nhill Aviation Heritage Centre Historic Engineering Expo Nhill Aerodrome.

POSTPONED Till 19th March 2022.

SEPTEMBER 17th and 18th Riverland Field Days. **CANCELLED.**

SEPTEMBER 30th OCTOBER 1st to 3rd 8th NHMA National Tractor Trek Wedderburn . **CANCELLED.**

SEPTEMBER 30th OCTOBER about 6 days Mallee Meander see Danny's page of information in this news letter (by the time some members get this news letter it will be half over) previous trekkers would be in the know. **If you decide to catch up remember be Covid Safe.**

OCTOBER 2nd and 3rd Ivanhoe Truck, Tractor, Car and Bike show. **CANCELLED.**

OCTOBER 9th Tractor Pull in house. **CANCELLED.**

OCTOBER 14th to 16th Mildura Show. **CANCELLED.**

CAN NOT GET ACROSS SOUTH AUSTRALIAN BORDER AT PRESENT.

OCTOBER 16th 17th Langhorne Creek Trek Charity Fund Raiser more information to come. ???

OCTOBER 17th Best of Ballarat Rally Ballarat Airport, 40 Airport Rd Mitchell Park **STATUS**

UNKNOWN ! set up day 16th Oct information :- Peter 0400154972 or Ben 0411189520 or Rod (0353424521)

OCTOBER 31st Red Cliffs Centenary Display. **POSTPONED TILL LATE 2022.**

OCTOBER Mt Barker's Power of the Past more information when available. **NO MORE INFORMATION.**

CHECK ON ALTERATIONS AND CANCELLATIONS BEFORE YOU GO !

THERE IS A LIGHT AT THE END OF THE TUNNEL, BUT I THINK ITS A TRAIN !!

Further Notes in relation to new permits

Following on from the note from Vic Roads about getting vehicles on to the permit scheme, here is the procedure again.

Get an application from the Vic Roads office or download one.

Fill the form out with the vehicle and your details.

Contact one of our scrutineers (Ken Creighton, Bryan Hamilton or Bob Fox) who will need to see the vehicle, check its eligibility and sign their section on the application. Suggest you take photos at this stage.

Contact the Secretary (Phil Newton) who will sign the club eligibility section of the application. If Phil is unavailable Ken will sign.

Get a roadworthy certificate from an authorised provider for the vehicle.

If it is a tractor or pre 1949 please contact Ken as there is a special roadworthy.

Check that all of the application has been filled out and the applicant has signed.

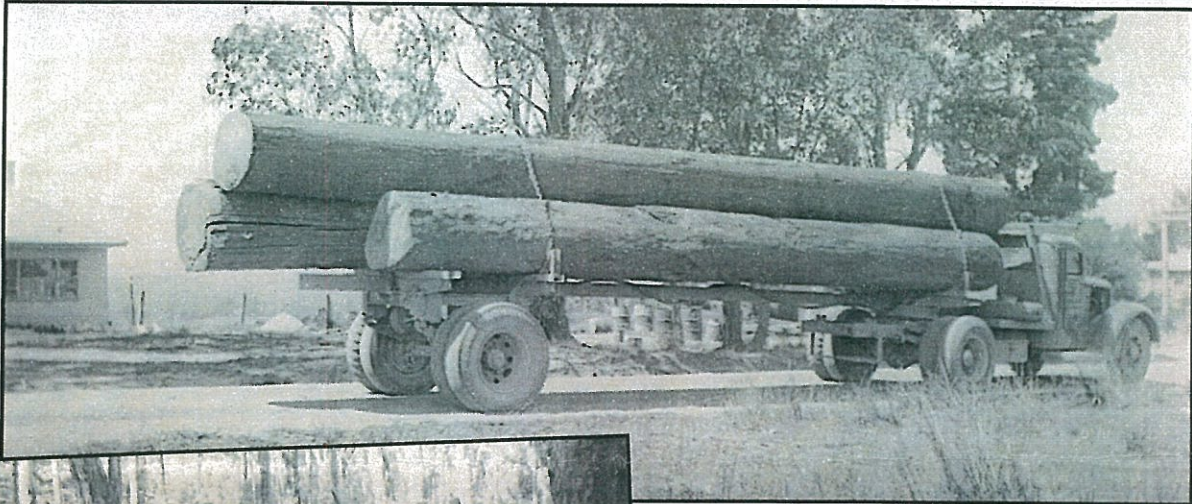
Then you can take all the paperwork into Vic Roads

Thanks

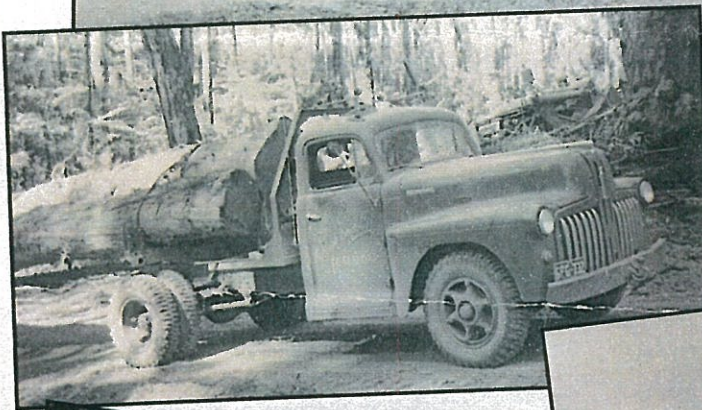
Phil Newton Secretary

Don't Forget Make sure you get the photos to Phil straight away. Front, Back, Left side, Right side, inside cabin, vehicle compliance plate, and after you have registered it a photo of the bit you stick in the logbook.

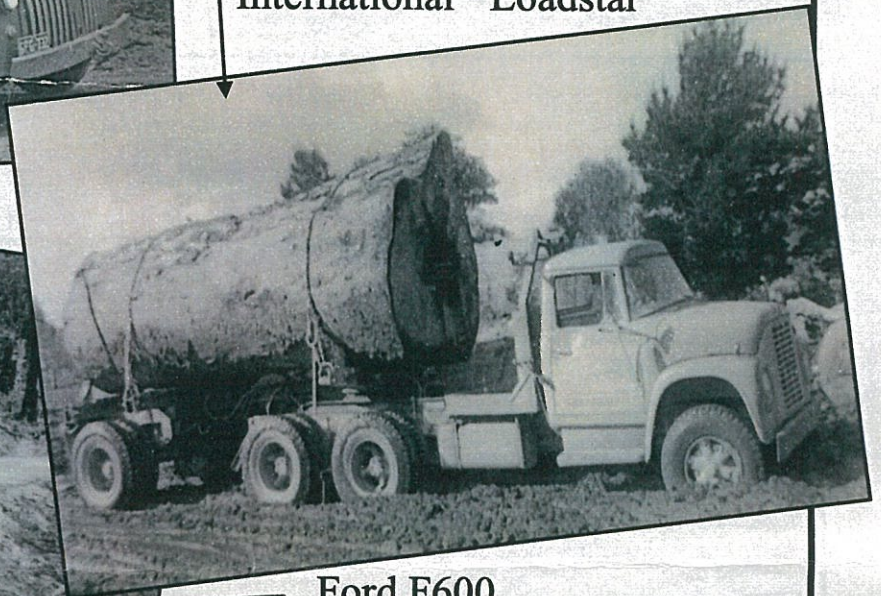
Log trucks and big loads - - - from somewhere



← 1950's Federal



International 'Loadstar'

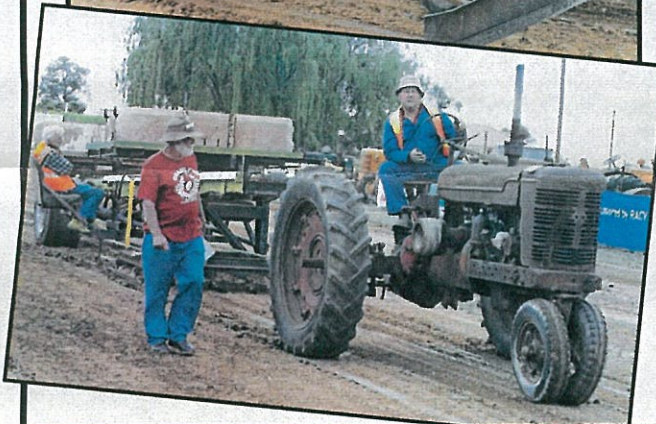


Ford F600

1940's Ford with Thornton Drive



Do you remember the 2012 Tractor Pull ?



T.R.A.C.S. Trek September/October 2021

Mallee Meander

We have been released from Covid lockdown. TRACS is having a trek for all members who wish to come along. We will be travelling throughout the Northern Mallee, visiting tractor collections and many interesting and historical places as we go. This trek should be suitable for all vehicle types.

Itinerary:

Depart Thursday 30th September 2021. 9:30am Wilga Road TRACS headquarters. Trek distance approximately 600 kms. Expected duration six days and nights. Fuel is available at Wemen, Kerang, Lake Boga, Swan Hill, Nyah, Piangle, Boundary Bend, Robinvale.

Trekkers need to be self sufficient for whole trip, food, water, camping gear, clothes, toiletries, etc.

Before trek check tractors trailers etc for fluid levels, grease bearings, check and tighten hitches, bolts, tyre pressures and generally service equipment so you can have a trouble free trek. Carry spares in case of breakdowns, hoses, belts, spare wheels, tow rope, jacks, etc. and for whatever else you think may go wrong.

Proposed TREK route and points of interest:

Nangiloc solar farm, Hattah Kulkine National Park, Wemen, follow Railway track from Annuello to Manangatang where we will be given a display of a farm tractor and self propelled header entirely built by Albert and George Oliver, these machines are still in use today. We continue to follow the railway track to Chinkapook, Ultima, Lalbert, and on to Quambatook. Then the Kerang lakes, Lake Boga, Swan Hill, Woorinen, Nyah, Wakool Junction, Murrumbidgee Junction, Boundary Bend, Kooloonong, through the Almond plantations, Robinvale, then home.

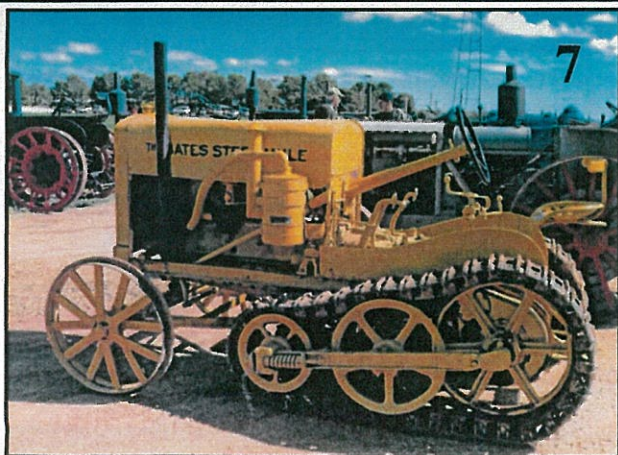
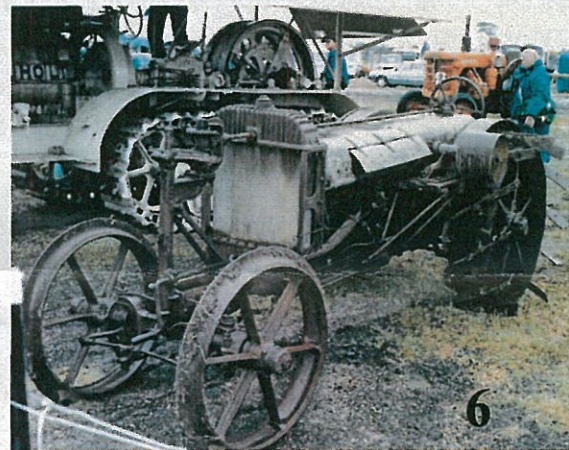
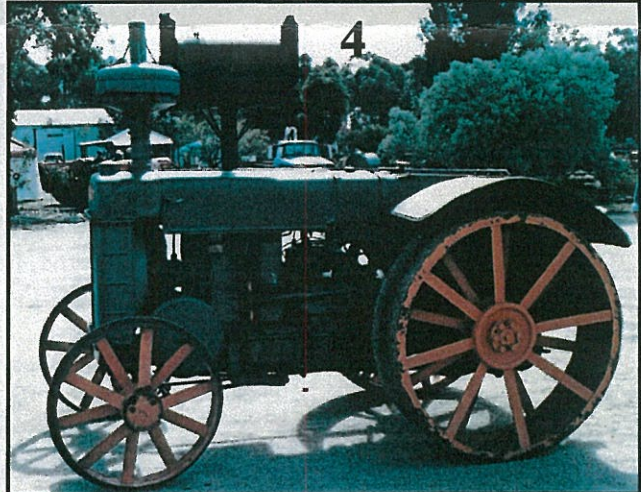
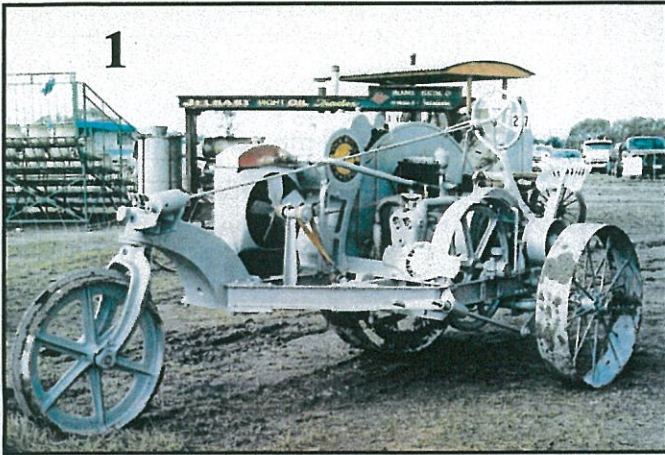
We may have a lunch or tea at a pub along the way if time permits, so allow for this in your planning. If you wish to take part in this TREK, please let **Danny Lee 0427 147 321**, **David Beard 0427 060 199**, or **Alan Whyte 0428 528 136** know before the 23rd of September so the details can be finalised.

The trek will depend on no further Covid restrictions being imposed.

Tractor for Sale

9G Chamberlain. Perkins engine. Fork lift fitted. Power steering. Rear tyres 80%. 3 point linkage. Louvre cab made by Horsham Engineering. Phone Harry Redmond 0428 373 266. Price negotiable.

How about some older tractors ?



- 1 The 'Bull' Jelbart
- 2 Bristol
- 3 Allis -Chalmers
- 4 Avance
- 5 Austin
- 6 Avery
- 7 Bates Steel Mule

Miscellaneous Makes taken on travels: here, there and somewhere else



1949 White



1936 Maple Leaf



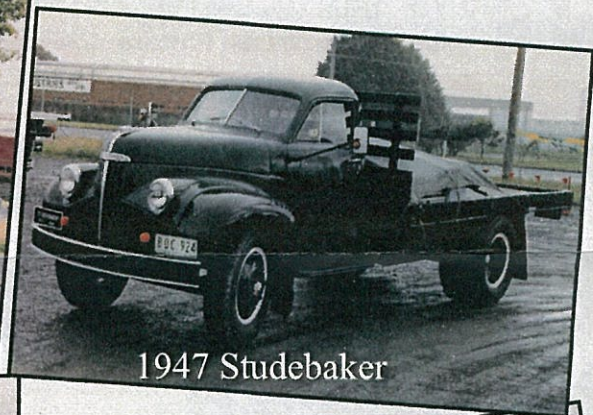
1948 Morris Commercial



1924 Yorkshire Steam



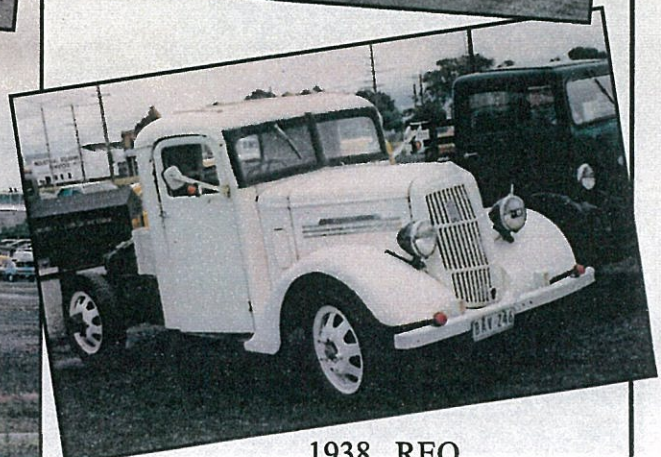
1936 Thorneycroft



1947 Studebaker



1978 Leader Drilling Rig



1938 REO

This news letter has been printed on a copier supplied by OEDigital, we thank you for your support.

TRACS INC. P.O. Box 569 Irymple VIC. 3498. Web site www.tracsmildura.com.au

President
Ken Creighton
P.O. Box 831.
Red Cliffs, Vic 3496.
Phone 0428742016.
blackdogs2@bigpond.com

Secretary
Phil Newton
22 Stockman Drive.
Irymple. Vic 3498.
Phone 0408920205.

Treasurer
Michael O'Callaghan
213 12st.
Mildura. Vic 3500.
Phone 61459226376.

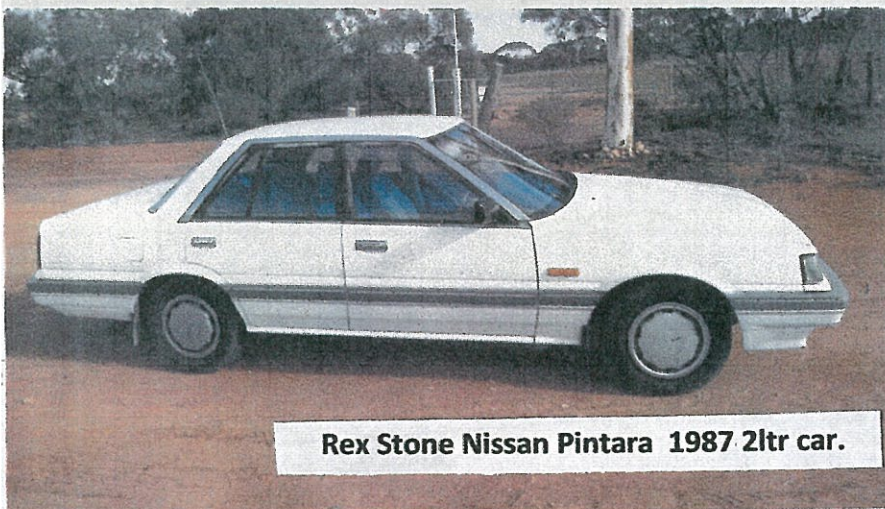
News Letter Co-ordinator
Geoffrey Lane.
130 Darling St.
Wentworth. NSW 2648.
Mobile 0434901812.

TRACS NEWS LETTERS.

During these trying times of isolation, borders closed, no or limited opportunity for events it has evolved into a team effort to produce our news letter. I will not try to name the team incase someone is left out. Even the posting of letters produces a challenge, to post in Wentworth could mean a minimum delivery time of 10 days, so we try to post in Victoria.

We have various suppliers and compilers of information, Danny has the printing challenge, Michael has the letter addresses, I have the pre posting compiling and John the cross border transporting and posting. This out lines a growing team effort to keep members in touch and informed. Thank you for your support and effort.

News letter Co-ordinator Geoffrey.



Rex Stone Nissan Pintara 1987 2ltr car.



Ian Hinks has gone into the earth moving business — albeit on a small scale